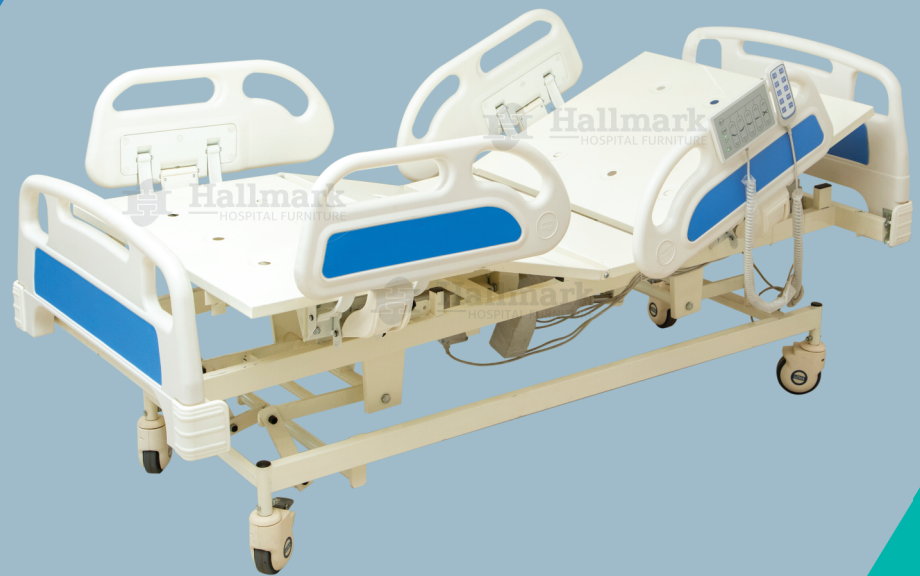




Hallmark
HOSPITAL FURNITURE
Technology for Healthcare



visit us on google : hallmark hospital furniture

**HOSPITAL FURNITURE &
O.T. EQUIPMENT**

www.hallmarkequipments.com

We...

Hallmark Hospital Furniture is recognized Organization in Health Care Industry since 2005. The aim was to manufacture & market high quality hospital equipments. We create products & also modify them according to our Customer's requirement.

Our products are being supplied all over Maharashtra, Karnataka and Goa in Government as well as Private Hospitals, Nursing Homes and Medical Colleges. Our quality and service has made us a company of repute in the Hospital Equipment Manufacturing Industry.

We are associated with best of the vendors from whom we can source our raw materials such as CRC Pipes, Stainless Steel Pipes, Stainless Steel Sheets, MS Sheets and Coating Powder. All these materials, which are sourced from established manufactures of Pune, Mumbai & Delhi, are used by us in manufacturing durable range and fine quality of all type of Hospital Furniture.

We at Hallmark are empowered with an efficient workforce of skilled staff, who is ready to offer their customers a broad range of products which satisfy to end users as well. Our company equipped with modern in-house manufacturing process, such as Hydraulic bending machine, sharing Machine, Power press Machine Pipe Bending Machine, Mig and Organ welding machine. We manufacture Stainless Steel & Epoxy Powder Coated products. All this has made Hallmark an organization with optimum combination of quality and price.

VISION

Hallmark Hospital Furniture is committed to enhance business by producing and providing quality products and services to achieve customer satisfaction through compliance to applicable requirements and continually improving process related to quality management system.





HHF - 700

ICU BED ELECTRIC

- Advance linear actuator system.
- Four pieces individual side-rails, ABS moulded.
- Heavy ABS head and foot panel.
- Framework made-up of M.S. tubes.
- 4 section top made-up of perforated CRCA M.S. sheet.
- Bed mounted on 5" castors, 2 with brakes.
- 4 Locations for I.V. bar.
- Holder for urine bag.
- Finish: pretreated & epoxy powder coated.
- Overall approx. Size 88"L X 36"W X 18" - 29"H
- Mattress size - 78" X 36"
- Positions obtained by hand remote.
 - Hi-Low
 - Backrest elevation
 - Kneerest elevation
 - Trendlenburg / Reverse Trendlenburg
- **Optional**
 - Nurse control system
 - 4" section mattress
 - Pillow
 - I.V. bar
 - Corner buffer wheel
 - File Holder



HHF - 701

ICU BED MECHANICAL (Deluxe)

- Four pieces individual side-rails, ABS moulded.
- Heavy ABS head and foot panel.
- Framework made-up of M.S. tubes.
- 4 section top made-up of perforated CRCA M.S. sheet.
- Bed mounted on 5" castors, 2 with brakes.
- 4 locations for I.V. rod.
- Holder for urine bag.
- Finish : pretreated & epoxy powder coated.
- Overall approx. Size : 82"L X 36"W X 22" - 31"H
- Mattress size - 72" X 36"
- Positions obtained by smooth crank system.
 - Hi-Low
 - Backrest elevation
 - Kneerest elevation
 - Trendlenburg / Reverse Trendlenburg

• Optional

- Mattress
- Corner buffer wheel
- SS. I.V. bar
- Pillow



HHF - 702

ICU BED MECHANICAL (Semi Deluxe)

- Heavy ABS head and foot panel.
- Two pieces individual deluxe side-rails.
- Framework made-up of M.S. tubes.
- 4 section top made-up of perforated CRCA M.S. sheet.
- Bed mounted on 5" castors, 2 with brakes.
- 4 locations for I.V. rod.
- Holder for urine bag.
- Finish : Pretreated & epoxy powder coated.
- Overall approx. Size : 82"L X 36"W X 22"- 31"H
- Mattress size - 72" X 33"
- Positions obtained by smooth crank system.
 - Hi-low
 - Backrest elevation
 - Kneerest elevation
 - Trendlenburg / Reverse Trendlenburg

● **Optional**

- Mattress
- Corner buffer wheel
- File Holder
- I.V. rod
- Pillow

HHF - 703

ICU BED

- Powder coated head and foot bows.
- Framework made-up of M.S. tubes.
- 4 section top made-up of perforated CRCA M.S. sheet.
- Bed mounted on 5" castors, 2 with brakes.
- Four locations for I.V. Rod.
- Finish : Pretreated & epoxy powder coated.
- Overall approx. Size : 78"L X 36"W X 22" - 31"H
- Mattress size - 72" X 33"
- Holder for urine bag.
- Positions obtained by smooth crank system.
 - Hi-Low
 - Backrest elevation
 - Kneerest elevation
 - Trendlenburg / Reverse Trendlenburg
- **Optional**
 - Stainless steel bows
 - Side railling
 - Mattress
 - I.V. rod
 - Side buffer wheel
 - Pillow



HHF - 712

PEDIATRIC BED

- Tubular head and foot bows of equal height with vertical tube support.
- Framework made-Up of M.S. tubes.
- Top made-up of perforated CRCA M.S. sheet.
- Two locations for I.V. rod.
- Full length side-rails on both sides.
- Finish : Pretreated & epoxy powder coated.
- Overall approx. Size : 62"L X 30"W X 22"H
- Mattress size - 60" X 28"
- Holder for Urine Bag.



HHF - 704

SEMI ICU BED (Deluxe)

- Heavy ABS head and foot panel.
- Two pieces individual deluxe side-rails.
- Framework made-up of M.S. tubes.
- 4 section top made-up of perforated CRCA M.S. sheet.
- Bed mounted on 5" castors, 2 with brakes.
- Four locations for I.V. Rod.
- Finish : pretreated & epoxy powder coated.
- Overall approx. Size : 78"L X 36"W X 22"H
- Mattress size - 72" X 33"
- Holder for urine bag.
- Positions obtained by smooth crank system.
 - Backrest elevation
 - Kneerest elevation
 - Trendlenburg / Reverse Trendlenburg



• Optional

- Mattress • I.V. rod • Side buffer wheel • Pillow

HHF - 705

SEMI ICU BED

- Powder coated head and foot bows.
- Framework made-up of M.S. tubes.
- 4 section top made-up of perforated CRCA M.S. sheet.
- Bed mounted on 5" castors, 2 with brakes.
- Two locations for I.V. rod.
- Finish : Pretreated & epoxy powder coated.
- Overall approx : Size : 78"L X 33"W X 22"H
- Mattress size - 72" X 31"
- Holder for urine bag.
- Positions obtained by smooth crank system.
 - Backrest elevation
 - Kneerest elevation
 - Trendlenburg / Reverse Trendlenburg



• Optional

- Stainless steel bows • Side railing
- Mattress • I.V. rod • Side buffer wheel • Pillow

HHF - 706

FOWLER BED (Deluxe)

- Heavy ABS head and foot panel.
- Two pieces individual deluxe side-rails.
- Framework made-up of M.S. tubes.
- 4 section top made-up of perforated CRCA M.S. sheet.
- Four locations for I.V. rod.
- Finish : Pretreated & epoxy powder coated.
- Overall approx.
Size : 78"L X 36"W X 22"H
- Mattress size - 72" X 33"
- Holder for urine bag.
- Positions obtained by smooth crank system.
 - Backrest elevation
 - Kneerest elevation



- **Optional**
 - Stainless steel legs
 - Mattress
 - I.V. rod
 - Side buffer wheel
 - Pillow



HHF - 707

FOWLER BED

- Powder coated head and foot bows.
- Framework made-up of M.S. tubes.
- 4 section top made-up of perforated CRCA M.S. sheet.
- Two locations for I.V. rod.
- Finish : Pretrated & epoxy powder coated.
- Overall approx :
Size : 78"L X 33"W X 22"H
- Mattress size - 72" X 31"
- Holder for urine bag.
- Positions obtained by smooth crank system.
 - Backrest elevation
 - Kneerest elevation
- **Optional**
 - Stainless steel bows
 - Stainless steel legs
 - Side railling SS
 - Mattress
 - I.V. rod
 - Side buffer wheel
 - Pillow



HHF - 708

SEMI FOWLER BED (Deluxe)

- Heavy ABS head and foot panel.
- Framework made-up of M.S. Tubes.
- 2 section top made-up of perforated CRCA M.S. sheet.
- Four locations for I.V. rod.
- Finish : Pretreated & epoxy powder coated.
- Overall approx :
Size : 78"L X 36"W X 22"H
- Mattress size - 72" X 33"
- Holder for urine bag.
- Positions obtained by smooth crank system.
 - Backrest elevation

• Optional

- Stainless steel legs • Side railing
- Mattress • I.V. rod
- Side buffer wheel • Pillow



HHF - 709

SEMI FOWLER BED

- Powder coated head and foot bows.
- Framework made-up of M.S. tubes.
- 2 section top made-up of perforated CRCA M.S. sheet.
- Two locations for I.V. rod.
- Finish : Pretreated & epoxy powder coated.
- Overall approx.
Size : 78"L X 33"W X 22"H
- Mattress size - 72" X 31"
- Holder for urine bag.
- Positions obtained by smooth crank system.
 - Backrest elevation

• Optional

- Stainless steel bows • Stainless steel legs
- Side railing • Mattress • I.V. rod
- Side buffer wheel • Pillow



HHF - 710

SIMPLE BED

- Framework made-up of M.S. tubes.
- Top made-up of perforated CRCA M.S. sheet.
- Two locations for I.V. rod.
- Finish : Pretreated & epoxy powder coated.
- Overall approx.
Size : 75"L X 30"W X 22"H
- Mattress size - 72" X 28"
Holder for urine bag.

- **Optional**

- Stainless steel bows
- Stainless steel legs
- Side railing
- Mattress
- I.V. rod
- Side buffer wheel
- Pillow



HHF - 711

ATTENDANT BED

- Framework made-up of M.S. tubes.
- Top made-up of perforated CRCA M.S. sheet.
- Finish : Pretreated & epoxy powder coated.
- Overall approx.
Size : 72"L X 24"W X 19"H
- Mattress size - 72" X 22"

- **Optional**

- Stainless steel legs
- Mattress
- Pillow



HHF - 713

BUNK BED

- Overall approx. Size : 78"L X 30"W X 72"H
- Mattress size - 72" X 28"



HHF - 714

CRADLE ATTACHMENT



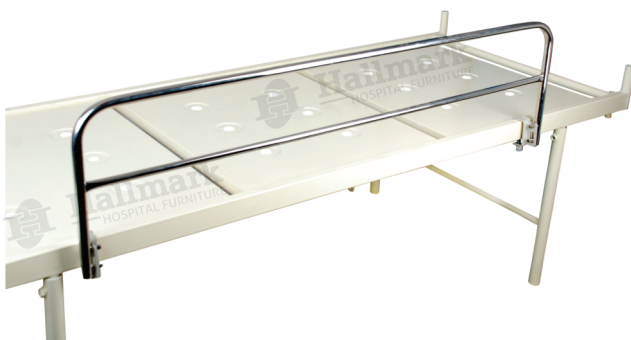
HHF - 715

SALINE BAR



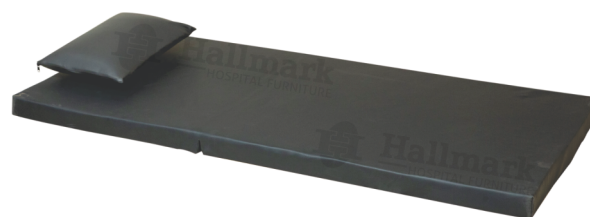
HHF - 716

SIDE RAILLING



HHF - 717

MATTERESS AND PILLOW



HHF - 718

C-ARM COMPATIBLE ELECTRIC OT TABLE

- Eccentric pillars.
- Stainless fitting.
- Detachable, head, leg & pelvic section.
- In built kidney bridge.
- Five sectional radio - Translucent top.
- Base & Cover made of attractive, easy to clean stainless steel.
- Sophisticated mechanics provide smooth, step less articulation of the table top for precise patient positioning.
- Standby Battery Back-up with recharging circuit.
- **Table Positions**
 - Height adjustment - Up & Down
 - Lateral tilt - Left & Right
 - Trendelenburg & Reverse trendelenburg
 - Flex Position & Reflex Position



HHF - 719

HEAD END CONTROL HYDRAULIC OP. TABLE

- Overall approx. size : 72" x 19"H-28" to 39"
- Backrest adjustment, head low/up, kidney bridge, lateral tilt maneuvered by screw system, provided with thrust ball bearings. All screws easily windable by independent handle.
- Hand rest, screen bar shoulder rest provided.
- Table is provided with smooth hydraulic pump for height adjusts.
- L bent deluxe ss lithotomy rods made of +12mm dia, 50mm thick mattress.

Above Table is also available in semi electric model in which height is adjustable by Electric cable Remote.



HHF - 720

C-ARM COMPATIBLE HYDRAULIC OT TABLE

- Eccentric pillars.
- Stainless fitting.
- Detachable, head, leg & pelvic section.
- In built kidney bridge.
- Five sectional radio - Translucent top.
- Base & Cover made of attractive, easy to clean stainless steel.
- Sophisticated mechanics provide smooth, step less articulation of the table top for precise patient positioning.



HHF - 721

ORTHO. OP. TABLE ATTACHMENTS



HHF - 722

SIMPLE OPERATION TABLE

- Overall approx.
size : 72" x 21"x H-32"
- Backrest operated on auto
ratchet arrangement.
- Leg section is removable.
- The entire table top gives
head low/up position by
screw system.
- SS lithotomy bar made
of 12mm dia.
- Waste collecting ss bowl
provided.
- **Options :**
 - Fully powder coated
 - Fully stainless steel
 - Top ss & base powder coated



HHF - 723

HEIGHT ADJUSTABLE OPERATION TABLE

- Overall approx.
size : 72" x 21" x H-26" to 34"
- Backrest operated on auto
ratchet arrangement.
- Leg section is removable.
- Two separate screw for
head low/up position &
height adjustment.
- SS lithotomy bar made of
12mm dia.
- waste collecting ss bowl
provided.
- **Options :**
 - Fully powder coated
 - Fully stainless steel
 - Top ss & base powder coated



HHF - 724

BIRTHING BED

- Approx. Dimensions:
72"L x 27"W x 24"-32"H.
- Tubular frame work mounted on swiveling castors. Stainless Steel top in three sections.
- Backrest operated on auto ratchet arrangement.
- Leg end section can slide under the main section.
- Height adjustable pair of knee crutches.
- Four swivel castors, 5" dia, two with lock.
- Positions obtained by Smooth crank system.
 - High low
 - Trendlenburg / Reverse trendlenburg



HHF - 725

LABOUR TABLE (Telescopic)

- Approx. Dimensions:
72"L x 27"W x 24". 32"H.
- Trendlenburg positions by smooth crank system.
- Backrest operated on auto ratchet arrangement.
- Leg end section can slide under the main section.
- Height adjustable a pair of lithotomy bar.
- waste collecting ss bowl provided.
- **Options :**
 - Fully powder coated
 - Fully stainless steel
 - Top ss & base powder coated



HHF - 726

PLAIN DELIVERY TABLE

- Overall approx. size 72" x 27" x H-32"
- SS lithotomy bar made of 12mm dia.
- Waste collection bowl provided.
- **Options :**
 - Fully powder coated
 - Fully stainless steel
 - Top ss & base powder coated



HHF - 727

EYE OPERATION TABLE

- Overall approx. size 72" x 27" x H-32"
- Head rest adjustable by manually.
- S.S screen bar is provided.



HHF - 728

FOOT OPERATED WASH TRUB

Depth : 14" x Width : 18" x Height : 44"



HHF - 729

WASH TRUB

Depth : 16" x Width : 16"



HHF - 730

CRASH CART

- Overall approx. Size : 28" x 16" W x 61" H
- Frame work made of S.S. Tubes.
- Two light weight alcon plastic co. moduler boxes each with three drawers with lock.
- Six number colour hand out small bins at eye level.
- Total three S.S. shelves with railing to carry medical equipments.
- The cart mounted on 4" dia castors.

Also available in M.S. frame

- **Optional**

- I.V. rod
- O₂ Cylinder cage



HHF - 731

MONITOR TROLLEY

- Overall approx. size : 22" x 18" x H-62"
- Five stainless steel shelves.
- Electrical board with good quality switches & sockets.
- Trolley mounted on four 125mm dia.
- Wheels two with brake.

- **Optional**

- I.V. rod
- O₂ Cylinder cage



HHF - 732

LAPAROSCOPY TROLLEY

- Overall Approx. Size : 22" L x 18" D x 62" H
- Three adjustable shelves, one fix shelves and one drawers.
- Trolley having two handle.
- The trolley mounted on 125 mm dia castors 2 with brakes.
- Switch & Socket for medical equipment.
- Finish : Pre-treated and epoxy powder coated .

- **Optional**

- I.V. rod
- O₂ Cylinder cage



HHF - 733

EXAMINATION LAMP - LED



HHF - 734

EXAMINATION LAMP



HHF - 735

LED - CT - 3

- | | |
|--------------------------|----------------------|
| ● Intensity | 80,000 Lux \pm 10% |
| ● Size of light field | 12 - 30 cm |
| ● Colour Temp. | 4000 - 5000 K |
| ● Colour Reduction Index | 93 RA |
| ● LED Life | >45000 Hrs. |
| ● Number of LED | 19 x 3 |
| ● Diameter of Light | 500 mm |
| ● Brightness control | Digital 9 Steps |
| ● Power Supply | 220 V / 50 Hz AC |
| ● Focusing | Adjustable |
| ● Battery Backup | Optional |



HHF - 736

LED - CT - 4

- | | |
|--------------------------|------------------------|
| ● Intensity | 1,20,000 Lux \pm 10% |
| ● Size of light field | 12 - 30 cm |
| ● Colour Temp. | 4000 - 5000 K |
| ● Colour Reduction Index | 93 RA |
| ● LED Life | >45000 Hrs. |
| ● Number of LED | 19 x 4 |
| ● Diameter of Light | 500 mm |
| ● Brightness control | Digital 9 Steps |
| ● Power Supply | 220 V / 50 Hz AC |
| ● Focusing | Adjustable |
| ● Battery Backup | Optional |



HHF - 737

LED - CT - 3+3



- | | | | |
|--------------------------|----------------------|----------------------|------------------|
| ● Intensity | 80,000 Lux \pm 10% | ● Number of LED | 12 x 3 + 12 x 3 |
| | 80,000 Lux \pm 10% | ● Diameter of Light | 500 mm x 2 |
| ● Size of light field | 12 - 30 cm | ● Brightness control | Digital 10 Steps |
| ● Colour Temp. | 4000 - 5000 K | ● Power Supply | 220 V / 50 Hz AC |
| ● Colour Reduction Index | 93 RA | ● Focusing | Adjustable |
| ● LED Life | >45000 Hrs | ● Battery Backup | Optional |

HHF - 738

LED - CT - 4+3



- | | | | |
|--------------------------|------------------------|----------------------|------------------|
| ● Intensity | 80,000 Lux \pm 10% | ● Number of LED | 12 x 3 + 12 x 4 |
| | 1,20,000 Lux \pm 10% | ● Diameter of Light | 500 mm x 2 |
| ● Size of light field | 12 - 30 cm | ● Brightness control | Digital 10 Steps |
| ● Colour Temp. | 4000 - 5000 K | ● Power Supply | 220 V / 50 Hz AC |
| ● Colour Reduction Index | 93 RA | ● Focusing | Adjustable |
| ● LED Life | >45000 Hrs | ● Battery Backup | Optional |

HHF - 739

EXAMINATION COACH

- Overall approx. Size :
72" x 24" x H-32"
- Body frame work made of CRCA sheet.
- Backrest adjustable on ratchet.
- Three drawers smoothly operated on telescopic channel.
- 1 ½ " Plain mattress.
- Foot step provided.
- B.P. tray provided.



HHF - 740

GYNEC EXAMINATION COACH

- Overall approx. Size :
72" x 24" x H-32"
- Body frame work made of CRCA sheet.
- Three drawers smoothly operated on telescopic channel.
- 1 ½ " Plain mattress.
- Foot step provided.
- B.P. tray provided.



HHF - 741

EXAMINATION COACH DELUXE

- Overall Approx. Size :
72" x 24" x H-32"
- Body frame work made of CRCA sheet.
- Four drawers smoothly operated on telescopic channel.
- 1 ½ " Plain mattress.
- Foot step provided.
- B.P. tray provided.



HHF - 742

EXAMINATION TABLE

- Overall approx. Size :
72" x 24" x H-32"
- Body frame work made of CRCA Sheet.
- **Optional**
 - S.S./M.S. Foot step.
 - Mattress



HHF - 743

X-RAY VIEW BOX

Size : Double - 27" x 17"
Single - 14" x 17"



HHF - 745

FOOT STEP (Double)

Size : 15" x 18" x 15" H



HHF - 744

MEDICINE ORGANIZER

Size : 15" x 6" x H-9"



HHF - 746

FOOT STEP (Single)

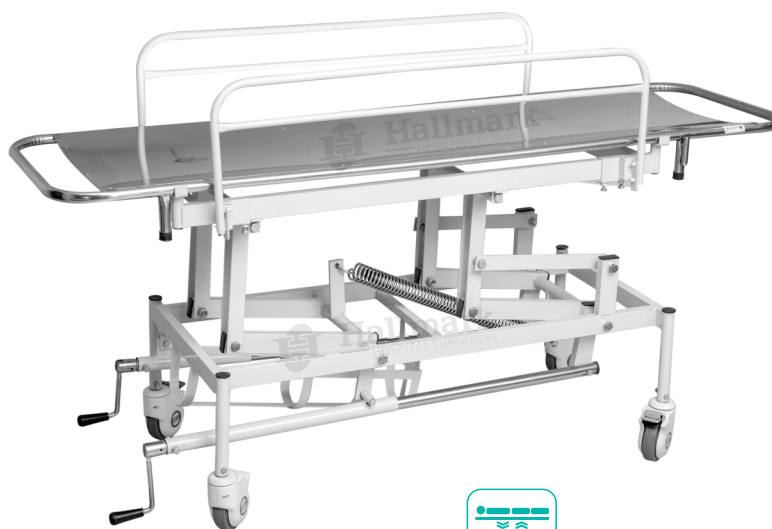
Size : 15" x 9" x 8" H



HHF - 747

PATIENT TROLLEY (Hi-Low)

- Finish : Pretreated and epoxy powder coated.
- Four swivel castors, 6" dia, two with total lock.
- Overall approx size: 78" x 23" x 28"- 36"H
- Side railing is provided.
- **Options :**
 - Fully powder coated
 - Fully stainless steel
 - Top ss & base powder coated
 - Mattress



HHF - 748

STRETCHER ON TROLLEY

- Overall Size : 78"L X 23"W X 34"H.
- Rectangular frame work mounted on 6" castors.
- Finish : Pretreated & Epoxy powder coated.
- **Options :**
 - Fully powder coated
 - Fully stainless steel
 - Top ss & base powder coated
 - Mattress



HHF - 749

FOLDING STRETCHER

- Overall Size : 72"L X 21"W X 32"H.
- Tubular frame work mounted on 6" castors.
- **Options :**
 - Fully powder coated
 - Fully stainless steel
 - Mattress



HHF - 750

BED SIDE SCREEN (3 Panels)

- Overall Size : 82"L x 70"H.
- M.S. tubular frame work made of 19mm x 18G in three section.
- Legs made of 25mm x 50mm x 18G mounted on 2" castors with curtains.
- Finish : Pre-treated and epoxy powder coated.



HHF - 751

CANVAS STRETCHER



HHF - 753

FOLDING WHEEL CHAIR



HHF - 752

WHEEL CHAIR



HHF - 754

COMPACT WHEEL CHAIR



HHF - 755

DRESSING TROLLEY

- Frame work made of S.S. tubes.
- Two S.S. shelves over with S.S. railings on three sides.
- The trolley fitted S.S. bucket and S.S. bowl.
- The trolley mounted on 100 mm dia castors.
- Size : **A.** 21"x17"x34"H **B.** 27"x21"x34"H



HHF - 756

INSTRUMENT TROLLEY

- Frame work made of S.S. tubes.
- Two S.S. shelves with three sides railing.
- The trolley mounted on 100 mm dia castors.
- Finish : S.S. frame with S.S. shelves.
- Size : **A.** 21"x17"x34"H **B.** 27"x21"x34"H



HHF - 757

BABY TROLLEY

- Overall approx. size 22" W x 15" D x 38" H.
- Approx. 25mm x 25mm SS Square tube frame.
- SS tray in head low position.
- Modular system with 3 drawers.
- Tray for ambu bag.
- Adjustable IV rod & lamp arrangement.
- Trolley mounted on 100mm-dia non-rusting twin roller castor.
- Available in pretreated & powder coated.



HHF - 758

MAYO'S TROLLEY

- Overall approx. Tray size : 17"L x 21"W.
- Adjustable height of tray approx. 32" to 50".
- Frame work made of 50 x 25 x 1.22 mm rectangular S.S. tubes.
- Tray made of S.S. 304 grade sheet.
- Table mounted on 50 mm dia castors.
- Finish : S.S. frame with S.S. top.

Also available in M.S. frame work and SS tray



HHF - 759

MODIFIED MAYOS TROLLEY

- Overall approx. Tray size : 20"L x 30"W.
- Adjustable height of tray approx. 32" to 50".
- Frame work made of 50 x 25 x 1.22 mm rectangular S.S. tubes.
- Tray made of S.S. 304 grade sheet.
- Table mounted on 50 mm dia castors.
- Finish : S.S. Frame with S.S. top.

Also available in M.S. frame work and SS tray



HHF - 760

DRUG TROLLEY



HHF - 761

DRUG TROLLEY - 36 BINS



HHF - 762

SURGEON CHAIR



HHF - 763

CARDIAC TABLE



HHF - 764

REVOLVING STOOL



HHF - 765

OVER BED TABLE

Size : 21" x 15"



HHF - 766

OVER BED TROLLEY

Size : 43" x 18" x 43"H Top size : 30" x 18"



HHF - 767

VISITOR STOOLS

Size : 13" x 13" x 18"



HHF - 768

BED SIDE TROLLEY

Size : 17" x 13" x 30"H



HHF - 769

BED SIDE LOCKER

Size : 15" x 12" x 30"H



HHF - 770

BED SIDE LOCKER (Deluxe)

Size : 15" x 12" x 30"H



HHF - 771

SALINE STAND



HHF - 772

E.C.G. TROLLEY - SS

Size : 17" x 14" x 42"H



HHF - 773

ECG TROLLEY DELUXE

Size : 18" x 15" x 33"H



HHF - 774

TROLLEY FOR JUMBO OXYGEN CYLINDER



HHF - 775

TROLLEY FOR SMALL OXYGEN CYLINDER



HHF - 776

SOILED LINEN TROLLEY



HHF - 777

BOWL STAND



HHF - 778

BABY CRADLE WITH STAND



HHF - 779

INSTRUMENT CABINET

Size : 30" x 15" x H-60"



HHF - 780

MONITOR BRACKET



HHF - 781

COMMODE CHAIR



HHF - 782

COMMODE STOOL



HHF - 783

INVALID'S WALKER



HHF - 784

DELUXE WAITING CHAIR

Size : 70" x 30" x H-30"



HHF - 785

SEMI DELUXE WAITING CHAIR

Size : 70" x 30" x H-30"



HHF - 786

WAITING CHAIR

Size : 60" x 20" x H-32"



HHF - 787

WAITING BENCH

Size : W 18" x H 20"



HHF - 788

WASTE COLLECTION TROLLEY



HHF - 789



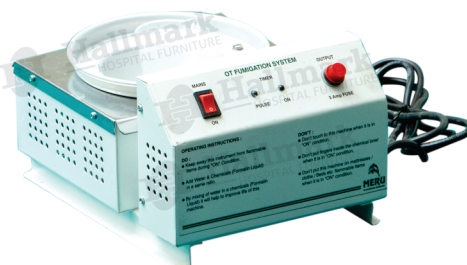
HHF - 790

BOYLE'S APPARATUS



HHF - 791

FUMIGATOR



HHF - 792

AUTO CLAVE



HHF - 793

LARYNGOSCOPE



HHF - 794

STEEL DRUM



HHF - 795

PATIENT SHIFTER



HHF - 796

FOGGER



HHF - 797

GARMENT FOR HOSPITAL





HALLMARK HOSPITAL FURNITURE

Gat No. 835, Plot No. 1, Near Savali Society, Behind Amit Process,
Shahapur, ICHALKARANJI - 416 115, Dist. Kolhapur (M.S.) INDIA

Cell. : +91 99221 42040, 94232 75232

E-mail : hallmark0102@gmail.com

Website : www.hallmarkequipments.com

Due to continuous product improvement programmes, technical specifications are subject to change without prior notice.

